

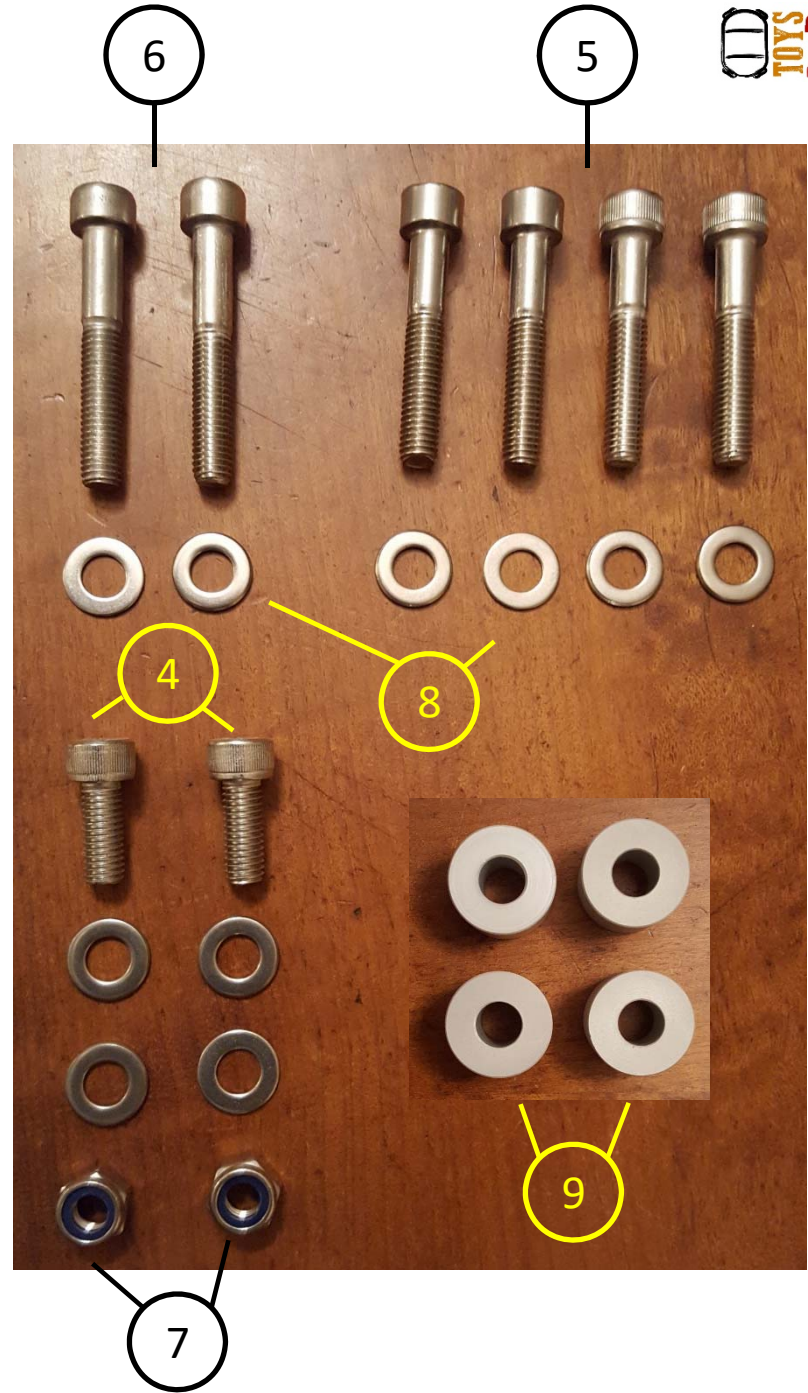
# Installation Guideline for the Kawasaki KLR650 Soft Luggage Pannier Racks

05 June 2017



Part	Description	Qty
1	Pannier Rack, Left Section	1
2	Pannier Rack, Right Section	1
3	Back Brace	1
4	Cap Screw, M8x20, Stainless Steel	2
5	Cap Screw, M8x45, Stainless Steel	4
6	Cap Screw, M8x50, Stainless Steel	2
7	Nut, M8, Nyloc, Stainless Steel	2
8	Washer, M8, Stainless Steel	10
9	Spacer, 14mm (M8, OD 20mm), Aluminium	4

The installation of the pannier racks is done by executing the following steps sequentially.



1

3

2

6

5

4

8

7

9

## Step 1

Remove the top bolt as shown and position the left pannier rack (1) and using the M8x50 bolt (6) and washer (8), secure the rack to the bike.

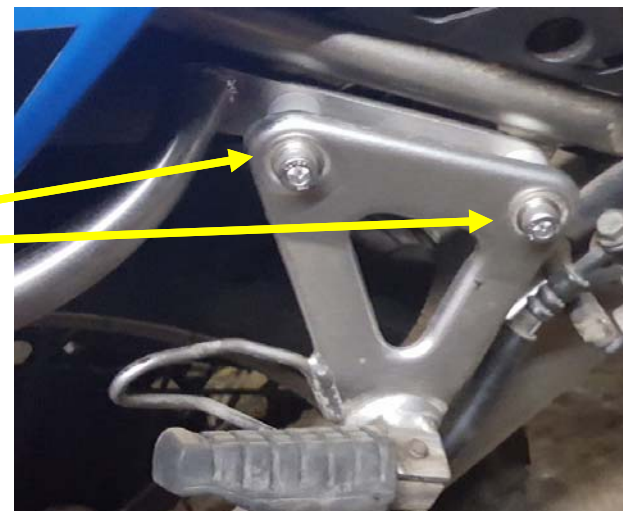
**DO NOT TIGHTEN!!**



## Step 2

Remove the left hand side pillion peg. Put the left pannier rack (1) into position, and replace the pillion peg using the two spacers (9), two M8x45 bolts (5) and two washers (8).

**DO NOT TIGHTEN!!**





### Step 3

Repeat Steps 1 & 2 for the right hand side of the motorcycle using the right pannier rack (2)

**DO NOT TIGHTEN!!**



### Step 4

Place the back brace (3) into position at the rear of the motorcycle and secure to the left and right pannier mounting tabs using the two M8x20 bolts (4), four M8 washers (8) and two M8 nyloc nuts (7).

**TIGHTEN ALL BOLTS FOR ALL STEPS!!**

