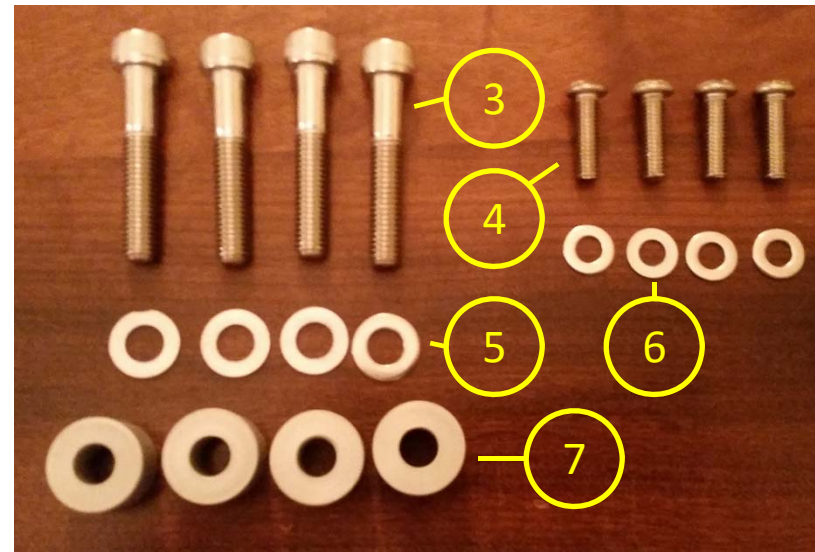
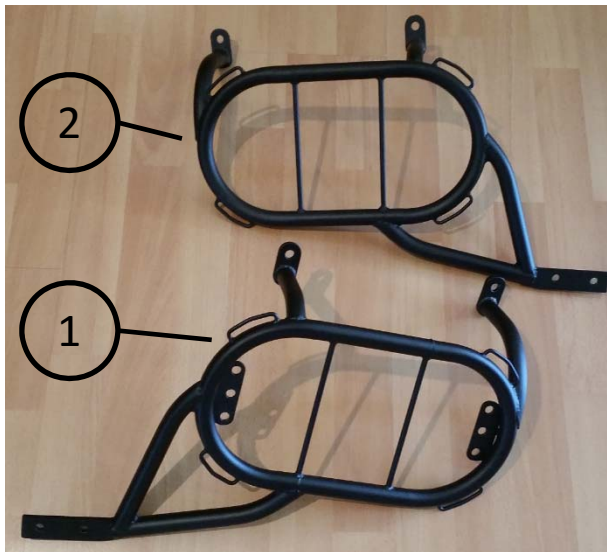


Installation Guideline for the Triumph Explorer Soft Luggage Pannier Racks

28 November 2015



Part	Description	Qty
1	Pannier Rack, Left Section	1
2	Pannier Rack, Right Section	1
3	Allen Cap, M8x45, Stainless Steel	4
4	Allen Cap, Button Head, M6x20, Stainless Steel	4
5	Washer, M8, Stainless Steel	4
6	Washer, M6, Stainless Steel	4
7	Spacer, 14mm, Aluminium	4



The installation of the pannier racks is done by executing the following steps sequentially.

Step 1

Remove the existing bolts as indicated on **both** the left and right sides of the motorcycle.



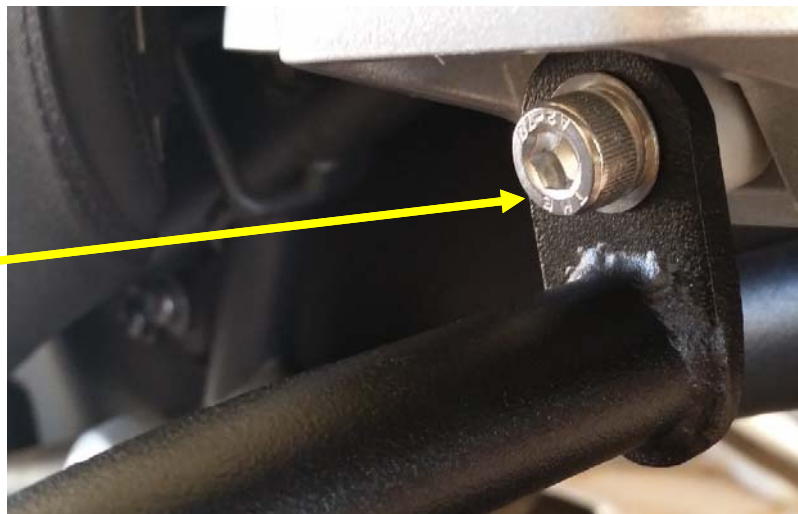
Step 2

Remove the black plastic cover from the pillion foot peg bracket on **both** the left and right side of the motorcycle using a star screwdriver.



Step 3

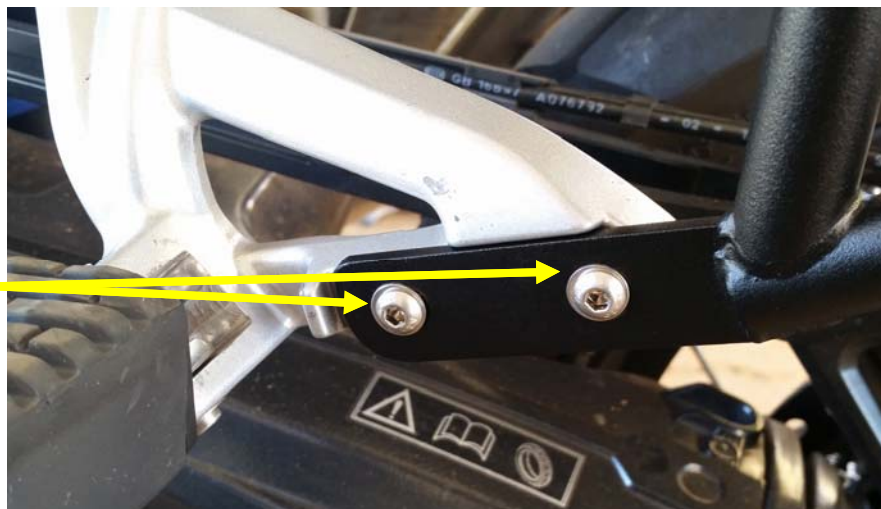
Place the left pannier rack (1) into position and secure the top two attachment arms to the motorcycle using the M8 screws (3), M8 washers (5) and spacers (7) as provided as indicated. Spacer is positioned between the rack and the motorcycle. **Do not tighten yet.**



Step 4

Secure the lower rack attachment to the pillion foot peg bracket using the M6 button head cap screw (4) and M6 washer (6) as indicated. Use some thread locker e.g. Loctite prior to securing the screws into place.

Now tighten to secure all screws.



Step 5

Position the right hand side bracket (2) into position and repeat Steps 3 & 4 for the right hand side.



Tool Tube Attachment

Tool tube attachment points are provided as shown. These attachment points may be used to attach other items onto the inside of the pannier rack as required e.g. small case.

